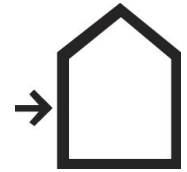


**PRODUCT BULLETIN**

**Sto Thermo Dowel**

81637-001 2" Thermo Dowel S  
81637-002 3" Thermo Dowel S  
81637-003 4" Thermo Dowel S  
81637-004 2" Thermo Dowel W  
81637-005 3" Thermo Dowel W

81637-006 4" Thermo Dowel W  
81637-007 3" Thermo Dowel C  
81637-008 4" Thermo Dowel C  
81638-001 Sto Thermo Cap Wool  
81639-001 Sto Thermo Countersunk Tool



**PRODUCT DESCRIPTION**

Sto Thermo Dowel is a pre-assembled fastener and dowel for the StoTherm ci Mineral system. It is specifically designed to minimize thermal conductivity.

**USES**

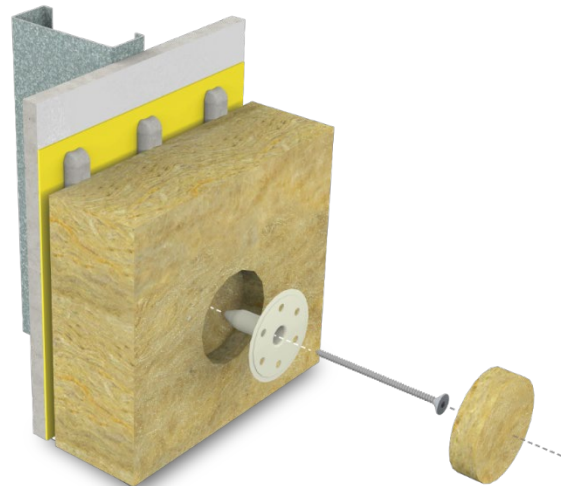
Sto Thermo Dowels are used to anchor insulation boards to the supporting structure in the StoTherm ci Mineral system.

**APPLICATION**

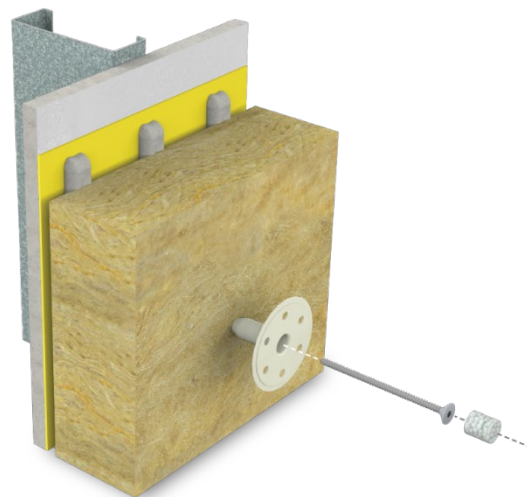
The type of Thermo Dowel used will depend on insulation board thickness and type of framing. Refer to the product information table below.

- For 3" and 4" boards, the dowels are countersunk into the mineral wool.
- The dowels are countersunk into the mineral wool, approximately 3/4" (19mm) with the Sto Thermo Countersunk Tool.
- Sto Thermo Cap Wool (see top right image) is then placed over the countersunk dowel and sits flush with the mineral wool surface.
- See Sto Thermo Cap Wool and Sto Thermo Countersunk Tool information located on page 2 of this document.

For details on fastener patterns and installation, refer to StoTherm ci Mineral installation guide.



Countersunk Sto Thermo Dowel with Sto Thermo Cap Wool



Surface Mount Sto Thermo Dowel with Thermal Plug

Insulation Board Thickness	Surface Mount Or Countersunk	Metal Framing	Wood Framing	Concrete	Packaging (Pieces)
2" (51 mm)	Surface Mount	2" Thermo Dowel S	2" Thermo Dowel W	Not Available	100
3" (76 mm)	Countersunk	3" Thermo Dowel S	3" Thermo Dowel W	3" Thermo Dowel C	100
4" (102mm)	Countersunk	4" Thermo Dowel S	4" Thermo Dowel W	4" Thermo Dowel C	100

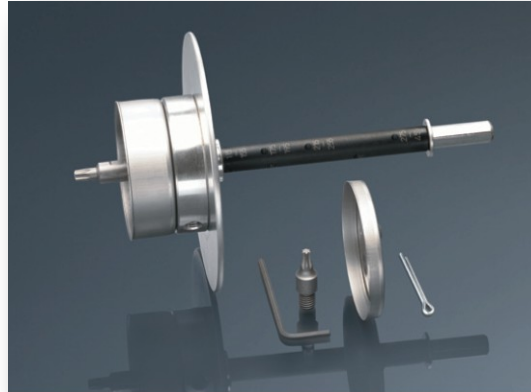
NOTE: Choose the dowel based on insulation board thickness and type of framing. For wall assemblies not included in this table, please contact Sto Technical Services.  
NOTE: Required bits for driving fasteners are: Sto Thermo Dowel C - Torx T30, Sto Thermo Dowel S - Torx T25, and Sto Thermo Dowel W - Torx T25

**PRODUCT BULLETIN**

**Sto Thermo Dowel**

**STO THERMO COUNTERSUNK TOOL**

The Sto Thermo Countersunk Tool is used to countersink Sto Thermo Dowels and drive them into the supporting structure. The tool compresses the mineral wool insulation board, prevents over-driving and helps achieve the proper depth for the dowel to be countersunk.



**DOWEL CAPS**

Sto Thermo Cap Wool is inserted into the recess after the dowels are properly countersunk. It aids to minimize thermal conductivity.



**Sto Corp.**  
3800 Camp Creek Pkwy SW  
Building 1400 · Suite 120  
Atlanta, Georgia 30331 USA  
Tel: (800) 221-2397  
Fax: (404) 346-3119  
helpdesk.stocorp.com  
[www.stocorp.com](http://www.stocorp.com)

Revision Number: 2.0  
Date: 05/2019

**ATTENTION**

This product is intended for use by qualified professional contractors, not consumers, as a component of a larger construction assembly as specified by a qualified design professional, general contractor or builder. It should be installed in accordance with those specifications and Sto's instructions. Sto Corp. disclaims all, and assumes no, liability for on-site inspections, for its products applied improperly, or by unqualified persons or entities, or as part of an improperly designed or constructed building, for the nonperformance of adjacent building components or assemblies, or for other construction activities beyond Sto's control. Improper use of this product or use as part of an improperly designed or constructed larger assembly or building may result in serious damage to this product, and to the structure of the building or its components. **STO CORP. DISCLAIMS ALL WARRANTIES EXPRESSED OR IMPLIED EXCEPT FOR EXPLICIT LIMITED WRITTEN WARRANTIES ISSUED TO AND ACCEPTED BY BUILDING OWNERS IN ACCORDANCE WITH STO'S WARRANTY PROGRAMS WHICH ARE SUBJECT TO CHANGE FROM TIME TO TIME.** For the fullest, most current information on proper application, clean-up, mixing and other specifications and warranties, cautions and disclaimers, please refer to the Sto Corp. website, [www.stocorp.com](http://www.stocorp.com).